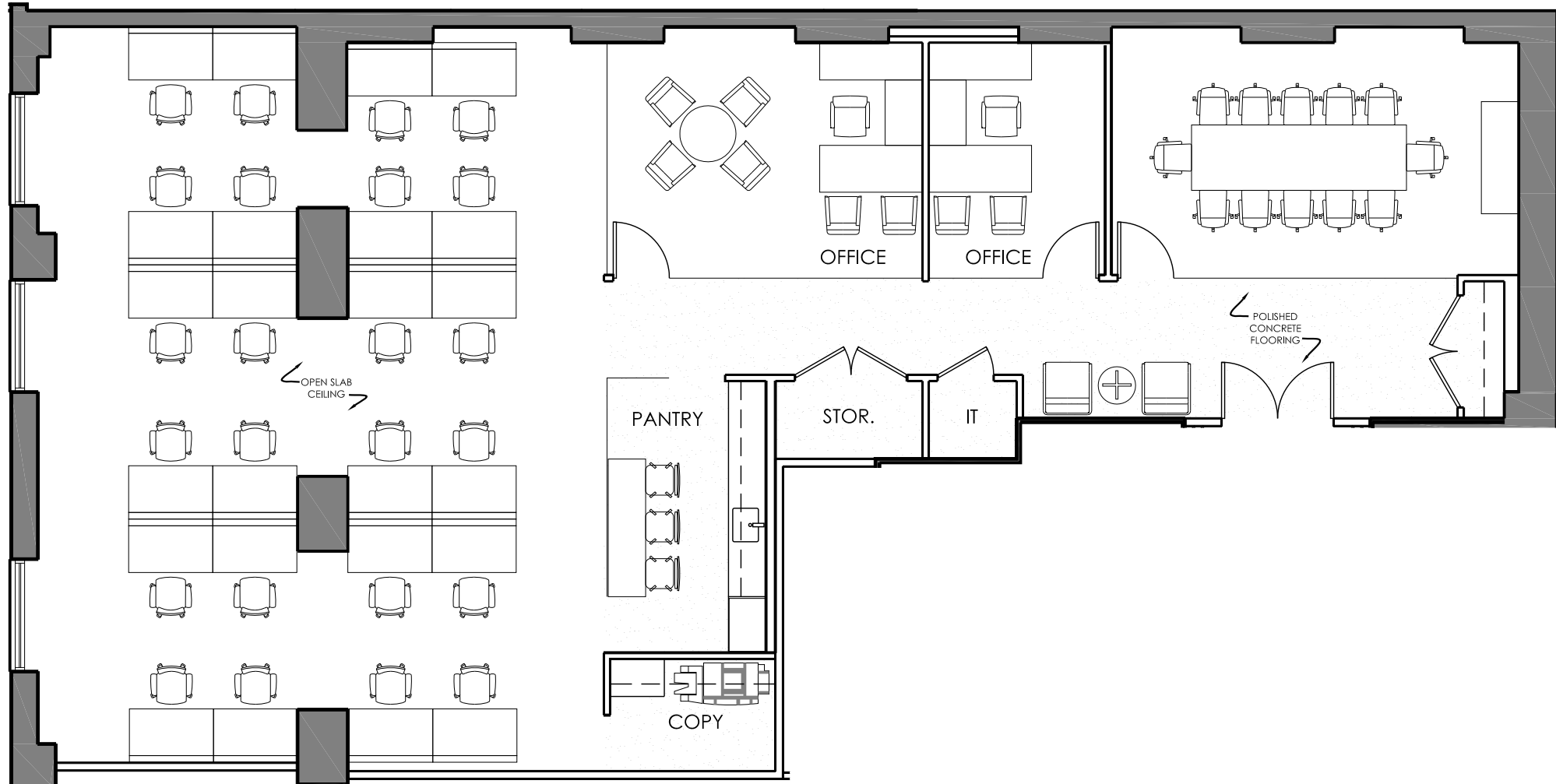
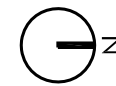


LEGEND	
	4,331 RSF
PRIVATE OFFICE	2
BENCHING SEAT	24
TOTAL EMPLOYEES	26



SCALE: 1/8" = 1'-0"

-- ALL DIMENSIONS AND CONDITIONS ARE --
APPROXIMATE AND SUBJECT TO FIELD VERIFICATION



PARTIAL 9TH FLOOR PROPOSED LAYOUT	
REVISION:	2
DATE:	06.20.16
DWG. NO.:	SSK-01 ALT2

CARNEGIE TOWER
152 WEST 57TH STREET
NEW YORK, NEW YORK

	LOFFREDO BROOKS ARCHITECTS P.C.
	118 WEST 22ND STREET - 4TH FLOOR
	NEW YORK CITY, NEW YORK 10011
	TEL 212.679.7729 FAX 212.725.8914
	E.MAIL INFO@LBARCH.COM